



Experts in  
fibre cement

PURO PLUS – COLORMAT CLASSIC | AMSTERDAM

# FIBRE CEMENT FACADE PANELS PRODUCT RANGE

G E T  
I N  
S P I  
R E D

DESIGN FOR A COLOURFUL LIFE

WWW.SVK.GLOBAL



ORNIMAT EST12 BLACK – 10RT MOORS





# CONTENTS

01

Fibre cement  
Facade panels  
**04 - 05**

06

Ornimat  
**20-23**

02

About SVK  
**06 - 07**

07

Colormat  
**24-27**

03

Puro Plus  
**08 - 11**

08

Installation of  
the panels  
**28-29**

04

Decoboard  
Classic  
**12 - 15**

09

International  
presence  
**30**

05

Decoboard Pure  
**16 - 19**

10

Product  
overview  
**31**

ORNIMAT - EST 11 CARBON - ARCHITECT K2 ARCHITECTURE



*An endless  
story of  
possibilities.*”

FIBRE  
CEMENT

# FACADE PANELS

## FIBRE CEMENT A MATERIAL WITH ITS OWN LANGUAGE

Fibre cement is a unique and durable material with endless possibilities. It is a material that is made from a combination of reinforcing fibres, additives, cement and water. **Fibre cement is a durable and strong material, which gives it a long life.**

## INCREDIBLE VARIETY OF SHAPES

Fibre cement facade panels offer countless possibilities when it comes to shape. Made-to-measure shapes and sizes are available for each individual project. Creativity and technical feasibility often conflict. However, with the SVK facade panels there are no longer any limits to creativity!

## COLOUR MEANS LIFE

With grey, black and white you can never go wrong. However, by combining colours you can reach new insights and achieve unique combinations. **Put colours next to each other and dare to combine them.**

## COMBINE MATERIALS

**Dare to combine materials!** Facade panels, slates, facing bricks or wood can perfectly be combined within one project.

## COLOURS LINKED TO NATURAL ELEMENTS

Choosing colours is often harder than expected. Look around and discover the **colours used in the buildings around you.** These will often give you a good idea of which colours would look nice in the surroundings.

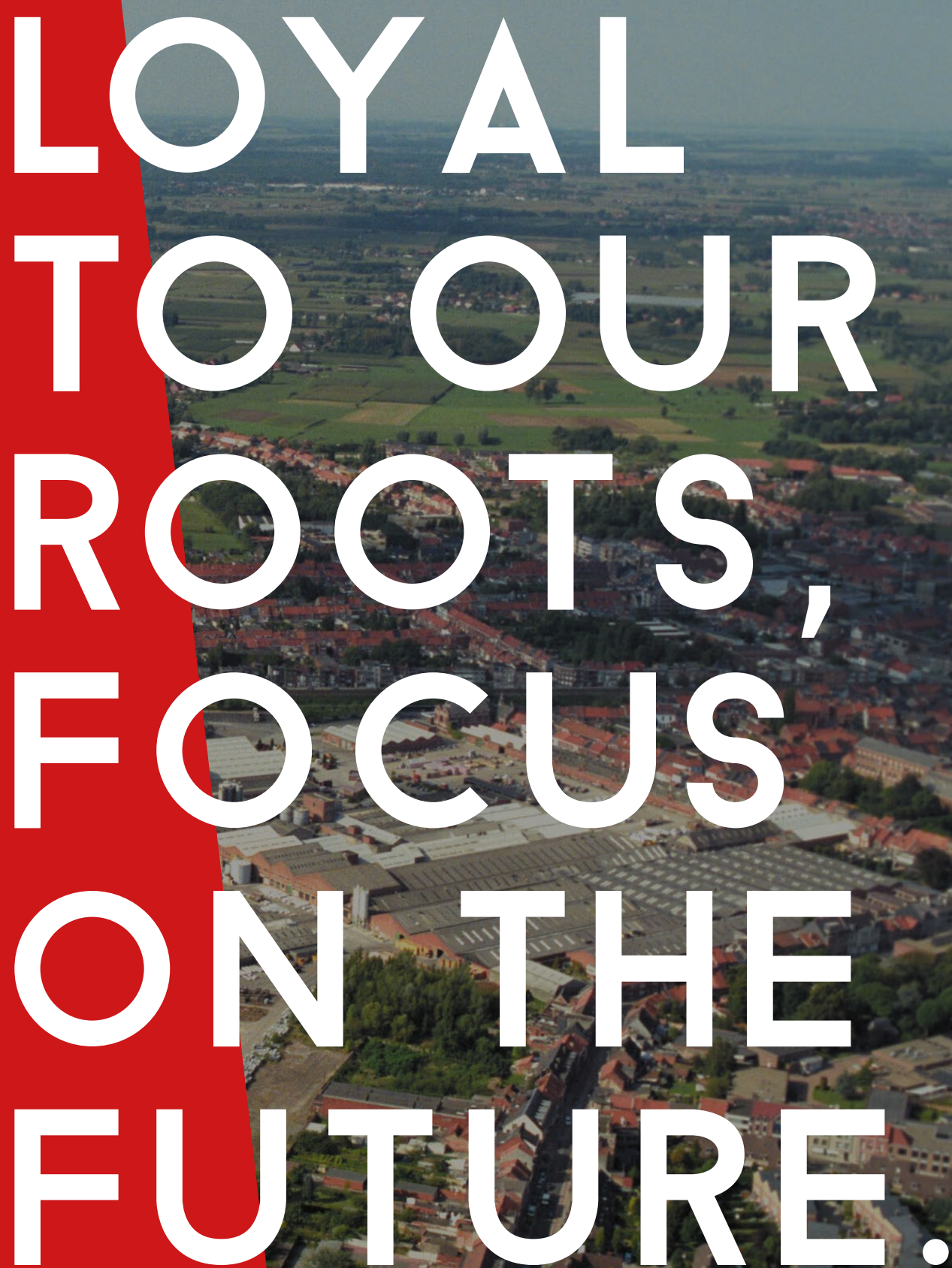
## NEW OR OLD IT DOES NOT MATTER

Whether the project is for a new construction or a renovation, this does not make **any difference at all.** In the case of a renovation, the facade panels offer the advantage, thanks to the reduced thickness of the panels, that thicker insulation layers can be applied. In addition, facade panels are often easier to match with existing elements of a building. **In the case of a new construction, the possibilities are endless** because you can let your creativity run free without needing to take into account existing elements.

## FIRE REACTION CLASS

SVK facade panels have a fire reaction class of **A2-s1,d0.** All building materials are divided into classes A to F. Class A1 and A2 is awarded if the materials contribute to a fire in only a very limited way under the most severe conditions, and that is the case with all SVK facade panels.



An aerial photograph of a town with red-tiled roofs and green fields, overlaid with a large red diagonal stripe. The text "LOYAL TO OUR ROOTS, FOCUS ON THE FUTURE." is written in large white capital letters across the center.

LOYAL  
TO OUR  
ROOTS,  
FOCUS  
ON THE  
FUTURE.



*A family business  
with a rich tradition and a  
focus on the future.* ”



## PAST

### MORE THAN 115 YEARS OF BUILDING KNOW-HOW

A **family business** with a rich tradition and a focus on the future. We currently have over 115 years of experience as a producer and distributor of construction materials. Thanks to this experience we know better than anyone how to adapt to constant evolution.

Today our specialty is the production of **fibre cement**, a material made from a combination of reinforcing fibres, additives, cement and water. Fibre cement is used for both roofing and facade applications. From agricultural applications involving **sheets of corrugated material** to unique design projects using **slates and facade panels**.

## FUTURE

Through continuous product development we try to produce **new and unique facade panels all the time**. This way, **each facade has its own touch**.

In addition, ecology is an increasingly important element in the construction sector. Partly due to the fact that leftover materials from Ornimat façade panels are completely recycled, we are consciously reducing our waste mountain.



PURO PLUS

*Slightly sanded  
fibre cement  
facade panel.*

”



# PURO PLUS

## NATURAL FIBRE CEMENT LOOK

The Puro Plus facade panel is a slightly sanded fibre cement facade panel. The Puro Plus panel does not have a coating, which means that the pure fibre cement material is visible. This gives it a natural look and feel.

## LIVELY & ROBUST

Due to this natural effect, changing weather conditions create a typical **natural play** of shades of grey in the panel. Thanks to the special sanding, the panel acquires a cloudy structure, for an even livelier look.

## CALIBRATED AND PACKED

Just like Decoboard, the panels are always calibrated, which ensures a perfectly smooth surface. After that, each panel is covered with a protective film. The film is removed immediately after installation. This ensures that no residues remain on the visible side of the panel.



PURO PLUS - KATY LAMENS





PURO PLUS NATURAL GREY

# TEXTURED

---

With the Puro Plus façade panel, you cover your facade with a panel extremely soft and smooth. The visible side is slightly sanded.

# STANDARD COLOURS

---



PURO PLUS  
**NATURAL  
GREY**



DECOBOARD CLASSIC

*High-quality  
air-dried fibre  
cement facade  
panel.*

”



# DECOBOARD CLASSIC

---

## DECOBOARD CLASSIC HIGH-QUALITY COATING

Decoboard Classic has a high-quality UV-resistant acrylic paint finish.

## FROM STANDARD COLOURS TO NEARLY THE ENTIRE RAL – NCS COLOUR RANGE

As a standard, our range includes 14 colours. From the standard colours we always have stock. In addition, from 150 m<sup>2</sup> onwards you can order nearly any RAL and NCS colour.

## AIR-DRIED

The panel hardens naturally. This gradual drying process helps to create a particularly strong and stable panel.

## CALIBRATED AND PACKED

Just like Puro Plus, the panels are always calibrated, which ensures a perfectly smooth surface. After that, each panel is covered with a protective film. The film is removed immediately after installation. This ensures that no residues remain on the visible side of the panel.





DECOBOARD CLASSIC - DCL 02 MID-GREY - RAL5022 - STRATEGIE ARCHITECTEN

DECOBOARD CLASSIC  
DCL01 WHITE

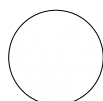
# TEXTURED

## DECOBOARD CLASSIC

The Decoboard Classic facade panel has a matte appearance and an extremely smooth finish on the visible side. The edges are not coated in the same colour. The visible side is finished with acrylic paint, the rear side with a water-based coating.

# STANDARD COLOURS

## DECOBOARD CLASSIC



DCL01  
WHITE



DCL02  
MID GREY



DCL03  
GREY



DCL04  
BLACK



DCL05  
ANTHRACITE-  
GREY



DCL06  
BLACK-  
GREY



DCL07  
QUARTZ-  
GREY



DCL08  
COPPER-RED

## DECOBOARD CLASSIC ELEMENTS



DCLM01  
FIRE



DCLM02  
SUNRISE



DCLM03  
SAND



DCLM04  
FOREST



DCLM05  
WATER



DCLM06  
WOOD

# INSPIRATION COLOURS



From 150 m<sup>2</sup> onwards you can order nearly any RAL and NCS colour.



DECOBOARD PURE

*Transparent  
or semi-  
transparant  
finishing.*

”



# DECOBOARD PURE

## DECOBOARD PURE NATURAL STONE LOOK

A facade panel with the look of genuine natural stone, but with all the advantages of fibre cement. The gently cloudy pattern of this facade panel makes it a unique product. In addition, this facade panel is available in three different shades of grey.

## PROTECTED EDGES

The edges of the Decoboard Pure panels should be sealed with a protector. Thanks to the sealing they get a nice smooth colour, similar to the visible side of the panel.

## TRANSPARENT OR SEMI-TRANSPARENT COATING

The transparent or semi-transparent coating on the front gives Decoboard Pure a soft, glossy appearance. Thanks to the coating, the panel retains its uniform appearance, and weather influences have no visible effect on the panel.

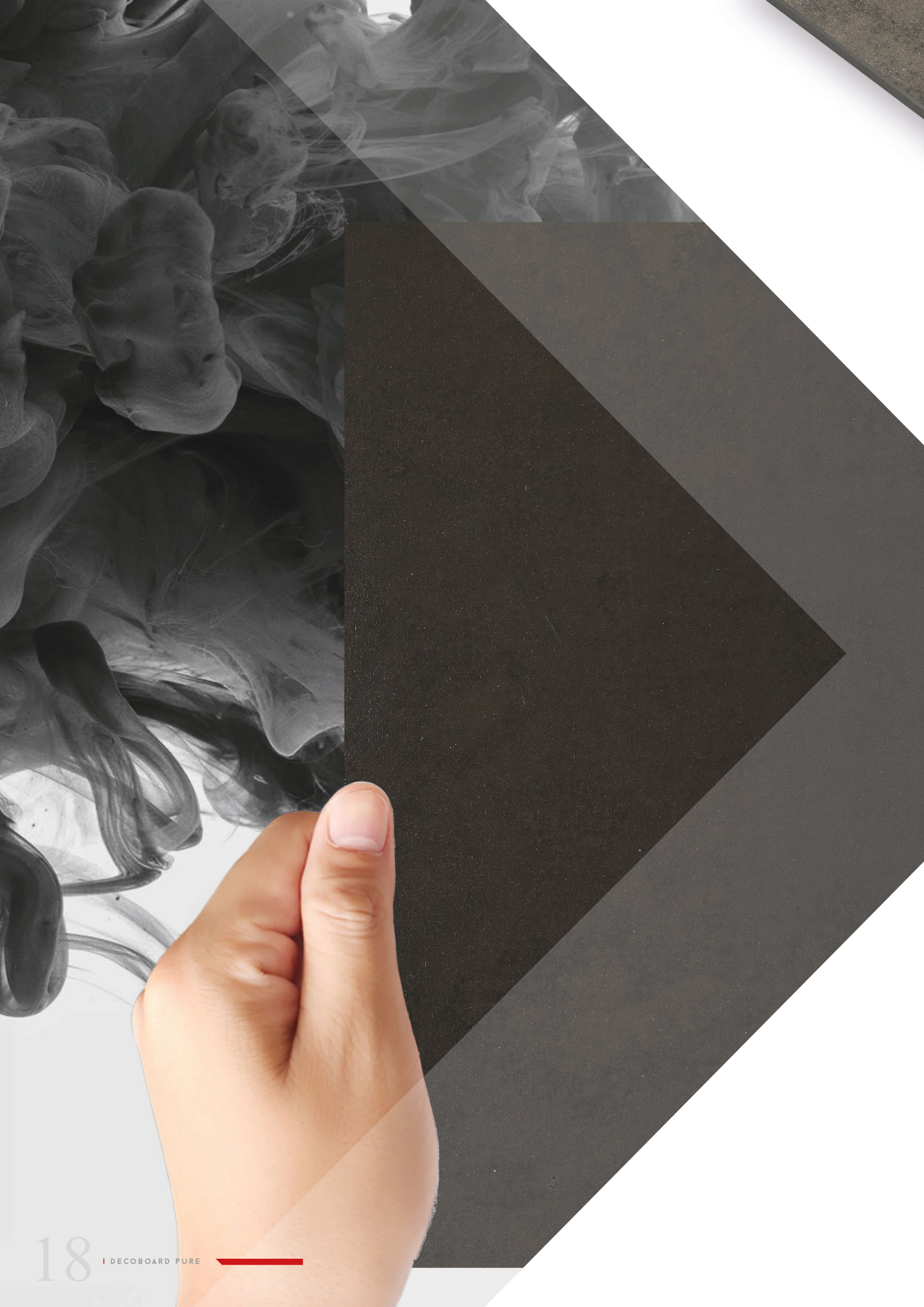
## AIR-DRIED

The Decoboard Pure facade panels, made only from the finest raw materials, harden naturally in drying rooms. This gradual drying process helps to create a particularly strong and stable panel.



DECOBOARD PURE - DPU03 THUNDER





DECOBOARD PURE  
DPU02 BURST

# TEXTURED

---

## DECOBOARD PURE

The visible side of the Decoboard Pure facade panel has a smooth, transparent finish. The rear side is finished with a water-based coating. The edges are not coated in the same colour. The edges should be sealed with a protector after cutting.

# COLOURS

---

## DECOBOARD PURE



DPU01  
GALE



DPU02  
BURST



DPU03  
THUNDER





ORNIMAT

*Top quality  
right to the edge.*

”

# ORNIMAT

## TOP QUALITY RIGHT TO THE EDGE

Thanks to the water-based, UV-resistant, two-component polyurethane coating, Ornimat is a sturdy, colour-fast panel. After processing, the panel is coated right to the edge. Thanks to the coated edges, Ornimat facade panels are unique in the facade panel world. Giving your facade an extra striking touch.

## AIR-DRIED

The panel hardens naturally. This gradual drying process helps to create a particularly strong and stable panel.

## LOW MAINTENANCE

Ornimat facade panels are static and don't attract dust. They require only limited maintenance thanks to the **high-quality coating**. Water or water with a mild, non-abrasive detergent suffices. Carefully adhere to our maintenance instructions for a good result.

## FROM STANDARD COLOURS TO NEARLY THE ENTIRE RAL-NCS COLOUR RANGE

As a standard, we always offer an **extensive colour range**. From the neutral Essentials colours to the eye-catching Elements range. In addition, from 150 m<sup>2</sup> onwards, you can order nearly any RAL and NCS colour.

The two-component UV-resistant coating provides a smooth and elegant look.

## 100% MADE-TO-MEASURE

You only pay for what you need, we always **saw the panels to size** for you so that the edges can also be coated. So only the supplied surface area is transported to the construction site and invoiced. The leftovers of the panels are 100% recycled in our factory. Therefore the panel is an ecologic friendly panel.



ORNIMAT – ESTD 1922 SEASHELL





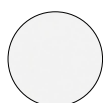
ORNIMAT ELM03 SAND

# TEXTURED

The Ornimat fibre cement facade panel has an extremely smooth surface with a matte appearance. The visible side is coated with a two-component UV-resistant polyurethane paint. The rear side is coated with only a protective water-based coating.

# STANDARD COLOURS

## ESSENTIALS RANGE



EST01  
WHITE



EST02  
SEASHELL



EST03  
CREAM



EST04  
IVORY



EST05  
QUARTZ



EST06  
STEEL



EST07  
GREY



EST08  
STONE



EST09  
JET



EST10  
SHADOW



EST11  
CARBON



EST12  
BLACK

## ELEMENTS RANGE



ELM01  
FIRE



ELM02  
SUNRISE



ELM03  
SAND



ELM04  
FOREST



ELM05  
WATER



ELM06  
WOOD


# INSPIRATION COLOURS



From 150 m<sup>2</sup> onwards you can order nearly any RAL and NCS colour.

For the latest colours and textures we refer you to our website [svk.global](https://svk.global).





COLORMAT

*The colour  
pigment is  
added during  
the production  
process.*

”

# COLORMAT

## COLORMAT COLOURED DURING MANUFACTURE

The Colormat facade panels are through coloured, so the edges are always coloured as well. After pressing, the panels are autoclaved, so that the panels are strong. After autoclaving, the coloured panels are sanded to achieve a **unique and playful effect**.

## HYDROPHOBED PROTECTIVE LAYER

The sanded panels are then waterproofed. This provides them with a water-repellent, transparent, matte protective layer. The waterproofing protects the panels against water and dirt, with the result that they are **low maintenance**. Thanks to the protective layer, the natural ageing process is retarded.

## COLORMAT CLASSIC

The Colormat Classic facade panel has a **slightly sanded** surface. This results in a smooth surface in which a subtle line structure is visible.

## COLORMAT SCRIPTO

The Colormat Scripto facade panel has a **deeply sanded** surface. This results in a clear line structure on the visible side. Depending on the direction of installation, you can create a vertical or horizontal line pattern. These patterns can also be combined to achieve a facade with more depth and character.

## COLORMAT TOUCH

The Colormat Touch facade panel has no sanded line structure as the Classic & Scripto panels. Through the unique production process the panel receives a soft look of facade plastering. Currently available in three neutral colours.







COLORMAT SCRIPTO  
S402 SLATE

COLORMAT CLASSIC  
H411 RASPBERRY

# TEXTURED

## COLORMAT CLASSIC

The Colomat Classic facade panels have a smooth sanded surface with a matte appearance.

## COLORMAT SCRIPTO

The Colomat Scripto facade panels have a rough surface with a matte appearance.

## COLORMAT TOUCH

The Colomat Touch facade panels have a soft look of facad plastering.

# COLOURS

## COLORMAT CLASSIC (H) & COLORMAT SCRIPTO (S) & TOUCH (T)

### STANDARD COLOURS



H401  
S401  
T401  
JASMINE



H402  
S402  
T402  
SLATE



H403  
S403  
T403  
STORM



H420  
S420  
T420  
PEARL

### PROJECT COLOURS



H405  
S405  
T405  
NATURAL



H406  
S406  
T406  
CAMEL



H407  
S407  
T407  
DAYBREAK



H408  
S408  
T408  
CHESTNUT



H409  
S409  
T409  
SUNSET



H410  
S410  
T410  
EARTH



H411  
S411  
T411  
RASPBERRY



H412  
S412  
T412  
CHAMPAGNE



H413  
S413  
T413  
CARIBBEAN

For the latest colours and textures we refer you to our website [svk.global](http://svk.global).



# INSTALLATION OF THE PANELS

---

## INSTALLATION ACCORDING TO YOUR WISHES

Through the years, SVK has developed a variety of systems for attaching facade panels. Each of these techniques guarantees a durable, high-quality result. Furthermore, visible as well as hidden attachments are possible for all types of panels.

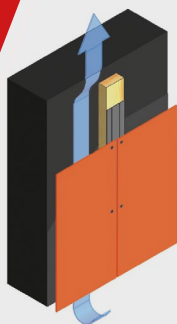
## VENTILATED FACADE

When installing fibre cement facade panels, it is important to choose a ventilated façade system. The facade panel protects the insulation and the underlying façade structure. Thanks to the ventilated installation, the panels have the breathing space they need.

## FIRE REACTION CLASS

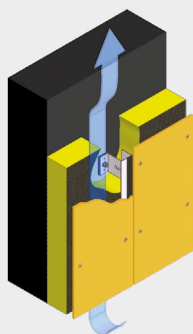
The facade panels from SVK comply with fire reaction class A2-s1,d0. This means that they only make a limited contribution to fires, under the most severe conditions. If you wish to install a fire-safe façade, it is not just the facade panel that is important. It is also important to choose a suitable insulation material and mounting system. We can always give you more advice in this respect.

# *Different systems, different looks.* ”



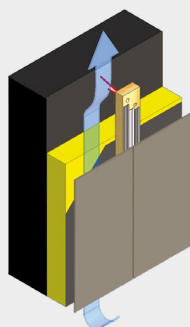
## **SCREWS**

All SVK facade panels can be attached with screws to the (wooden or metal) supporting structure. For this we use facade panel screws with a coated round head. These are screwed perpendicularly in the middle of the pre-drilled screw holes.



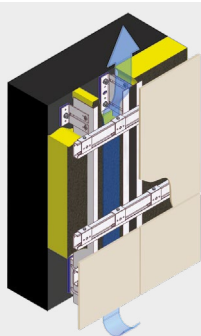
## **RIVETS**

All SVK facade panels can be attached to metal support structures using rivets. Rivets are available in the same colour as the facade panel.



## **GLUE**

SVK facade panels are glued to last, with a gluing system that remains elastic and is specially designed for fibre cement facade panels. This gluing system consists of a double-sided, self-adhesive strip, and a strip of glue. Make sure that you read the glue manufacturer's recommendations for each type of facade panel when installing them. The recommendations vary depending on the type of panel, and the correct instructions must always be followed.



## **INVISIBLE MECHANICAL FASTENING**

The strength of our 8 mm panels means that they can also be installed using an invisible mechanical fastening system. This applies to the product groups Puro Plus, Ornimat and Decoboard. In this case the backs of the panels are fitted with fastening points in which panel hooks are placed with a tension-free anchor. These are then used to fasten the panels onto a suitable supporting structure.





SVK

# INTERNATIONAL PRESENCE

Benelux  
France  
Germany  
Ireland  
United Kingdom  
United States  
Turkey  
Poland  
Switzerland  
Spain  
Iceland  
Australia  
India  
Cyprus  
Middle-East

BRAND NAME	PURO PLUS		DECOBOARD		ORNIMAT	COLORMAT		
FINISH			CLASSIC	PURE		CLASSIC	SCRIPTO	TOUCH
	<ul style="list-style-type: none"> <li>Natural grey panel</li> <li>Untreated lightly sanded surface</li> <li>Natural effect on panel</li> </ul>		<ul style="list-style-type: none"> <li>Coated in one colour</li> <li>Standard colours in stock</li> <li>Edge not coated in the same colour</li> <li>High quality UV resistance acrylic coating</li> <li>Can be sawn to size in advance or on site</li> </ul>	<ul style="list-style-type: none"> <li>Transparent and semi-transparent coating</li> <li>High quality UV resistance acrylic coating</li> <li>3 standard colour shades</li> <li>Natural stone look</li> <li>Possibility for sawing in advance, or on site</li> </ul>	<ul style="list-style-type: none"> <li>Coated in one colour</li> <li>Sawn to size in advance</li> <li>Edges coated in the same colour</li> <li>High-quality UV-resistant 2-component Polyurethane coating</li> <li>No left-overs on site</li> </ul>	<ul style="list-style-type: none"> <li>Coloured during manufacture</li> <li>Waterproofed: water-repellent, transparent protective layer</li> <li>Fine line pattern</li> </ul>	<ul style="list-style-type: none"> <li>Coloured during manufacture</li> <li>Waterproofed: water-repellent, transparent protective layer</li> <li>Unique texture due to the sanding directions</li> </ul>	<ul style="list-style-type: none"> <li>Coloured during manufacture</li> <li>Waterproofed: water-repellent, transparent protective layer</li> <li>Unique texture with the look of facade plastering</li> </ul>
DIMENSIONS	SQUARED	NON-SQUARED	SQUARED	NON-SQUARED	SQUARED	SQUARED	SQUARED	SQUARED
	Standard: 3,070 x 1,220 mm 2,520 x 1,220 mm	Standard: 3,085 x 1,235 mm 2,535 x 1,235 mm	Standard: 3,070 x 1,220 mm 2,520 x 1,220 mm	Standard: 3,085 x 1,235 mm 2,535 x 1,235 mm	Length (to size) Width (to size) max. dimensions 3,070 x 1,220 mm	Length: 2,500 or 3,050 mm Width: 1,220 mm	Length: 2,500 or 3,050 mm Width: 1,220 mm	Length: 2,500 or 3,050 mm Width: 1,220 mm
Fire performance in accordance with EN 13501-1	A2-s1, d0		A2-s1, d0		A2-s1, d0	A2-s1, d0	A2-s1, d0	A2-s1, d0
Reaction to fire classification								
THICKNESS (IN MM)	8 mm		8 mm		8 mm	8 mm	8 mm	8 mm
WEIGHT	± 14.60 kg/m²		± 14.60 kg/m²		± 14.60 kg/m²	± 14.40 kg/m²	± 14.40 kg/m²	± 14.40 kg/m²
SCREWS*	●		●		●	●	●	●
GLUE*	●		●		●	●	●	●
RIVETS*	●		●		●	●	●	●
INVISIBLE MECHANICAL FASTENING*	●		●		●	●	●	●

\* Warning! Always consult local regulations.



SVK NV

Aerschotstraat 114  
B-9100 Sint-Niklaas  
T +32 3 760 49 00  
F +32 3 777 47 84  
info@svk.be



## INSPIRE AND BE INSPIRED

Discover our new SVK  
Architectural Labs  
website and find the  
right inspiration for your  
project. Send us your  
plans and we will be glad  
to look at the variety  
of endless possibilities  
using SVK Facades.



[WWW.SVK.GLOBAL](http://WWW.SVK.GLOBAL)

[WWW.SVK.GLOBAL](http://WWW.SVK.GLOBAL)